

# PEEL & ROOF

Decorative Self-Stick Roll Roofing

## DESCRIPTION

Peel & Roof™ is an attractive, granule surfaced, self-adhering roof membrane designed to be installed directly to the roof deck or to a secure underlayment. It is ideal for slopes greater than 1/2" per foot. Peel & Roof is composed of a strong, pliable polyester mesh infused with rubberized asphalt adhesive and coated with a top surface of decorative ceramic granules. A perforated release film protects the adhesive surface before installation and a 3" selvedge provides a secure, waterproof seal.

## INTENDED USES

Peel & Roof™ may be used on additions, sheds, garages, barns, stables, and all manner of homes. Popular colors blend with most asphalt shingles and other roofs.

## SPECIAL FEATURES

- Attractive granule surface
- No hot tar, flame, glue, or tools required—just peel & seal
- Selvedge sealing edge for easy, waterproof installation
- Perforated release film for flexible installation
- Choice of popular colors

PRODUCT DATA	Peel & Roof™
Application Range	Above 40° F
Color	White, Brown, Black
Roll Length	33.5 ft
Roll Width	39"
Coverage Area per Roll	100 ft <sup>2</sup>
Shipping Weight	65 lbs
Pallet Quantity	30 rolls

PROPERTY	Test Method	RESULTS
Thickness	ASTM D 3767	90 mils
Tensile	ASTM D 1970	> 80 lbf MD > 60 lbf XMD
Elongation	ASTM D 412	>75% XMD
Water Absorption	ASTM D 1228	< 0.1% max
Pliability @ -10° F	ASTM D 1970	Pass
Vapor Permeance	ASTM E 96	< 0.1% max
Nail Sealability	ASTM D 1970	Pass

## INSTALLATION

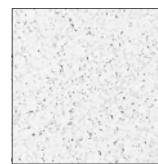
- Surface must be clean, dry & free from oil. For improved adhesion, prime deck with MFM Prime-A-Seal™. Primer must be completely dry to the touch before applying self-adhering membrane. For additional protection, Peel & Roof may be installed over a base sheet of MFM Wind & Water Seal™.
- Apply in clear, dry weather above 40° F. For cooler temperatures, it may be necessary to use MFM Spray Adhesive.
- Install on roof decks with a pitch of 1/2 : 12 or greater!
- Start at eave of roof. Peel off backing film and stick Peel & Roof to deck. Unroll evenly, pressing into place as you go.
- For next course, unroll and secure Peel & Roof™, using selvedge as a guide. Once secure, remove selvedge film from first course and press Peel & Roof into place. Roll seam firmly with hand roller.
- End laps must be at least 6". Trowel MFM Mastic+Plus™ or two continuous beads of asphalt caulk to granule side of Peel & Roof and press the next course of Peel & Roof into place. Roll seam firmly with a hand roller.

## CAUTION

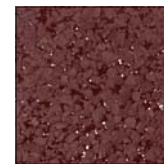
- Roof must have a minimum pitch of 1/2" per foot with good drainage and no standing water!
- Store product in carton away from water and sunlight when not in use.
- **Roof work is dangerous!** Please observe all safety precautions and work with care.

**Ten-Year Limited WARRANTY:** Contact MFM for complete detail.

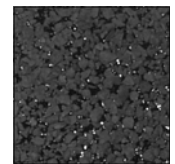
Available Colors:



White



Brown



Black